

# **CORPORATE PRESENTATION**

**JANUARY 2017**

# DISCLAIMER

This presentation on no account should be considered as a (i) service of financial analysis, (ii) investment recommendation (iii) or advice of any type, (iv) nor does it aim to offer any kind of financial product or service. The information contained in this presentation is general and does not reveal all the risks or other material factors. Before entering into any transaction, potential investors must ensure that they fully understand the terms of the securities/transactions and the risks inherent in them, considering (i) the information submitted to the Comisión Nacional del Mercado de Valores [www.cnmv.es](http://www.cnmv.es) (not the information contained in this presentation) and (ii) having taken appropriate professional or other advice.

Ibercaja Banco cautions that this presentation might contain forward-looking statements. While these statements represent our judgement and future expectations concerning the development of our business, a number of risks, uncertainties and other important factors could cause actual developments and results that differ materially from our expectations. It is expressly remarked here that no information herein contained should be taken as a guarantee of future performance or results.

The content in this presentation is regulated by the Spanish law applicable at time of writing, and it is not addressed to any person or legal entity located in any other jurisdiction (particularly USA or UK). For this reason it may not necessarily comply with the prevailing rules or legal requirements as required in other jurisdictions.

Neither Ibercaja nor other persons shall be liable for any direct, indirect, special, incidental, consequential, punitive or exemplary damages, including lost profits arising in any way from the information contained in this communication.

Any price(s) or value(s) are provided as of the date or time indicated and no representation is made that any trade can be executed at these prices or values. In addition, Ibercaja has no obligation to update any information contained herein.

This marketing communication is not intended for distribution to any kind of investors in the U.S.A., nor retail clients in the UK under any circumstances. Information set out on the presentation has come from a variety of sources, which Ibercaja considers to be reliable and have been chosen by Ibercaja with due diligence and reasonable care. Ibercaja does not provide any guarantee or warranty in respect of the accuracy, completeness, up-to-datedness', or quality as well as the availability at any time of the data and other information provided on the presentation. Any views, statements or representations provided for on this presentation do not necessarily reflect the opinion of Ibercaja.

Under no circumstances, including negligence, shall Ibercaja be liable for any DIRECT, INDIRECT, INCIDENTAL, SPECIAL or CONSEQUENTIAL DAMAGES, or LOST PROFITS that result from the reliance by a recipient on any information obtained from this presentation.

# TABLE OF CONTENTS

<b>OVERVIEW OF IBERCAJA BANCO</b>	<b>4</b>
<b>IBERCAJA'S KEY INVESTMENT HIGHLIGHTS</b>	<b>11</b>
<b>ANNEX 1. Consolidated Balance Sheet and P&amp;L Account</b>	<b>29</b>
<b>ANNEX 2. Strategic Alliance with Microsoft</b>	<b>32</b>

# OVERVIEW OF IBERCAJA BANCO

INTRODUCTION · SHAREHOLDER STRUCTURE · BANKING BUSINESS · GEOGRAPHICAL  
POSITIONING · CUSTOMER SERVICE LEVELS

# INTRODUCTION TO IBERCAJA BANCO

**9th largest bank in Spain in terms of assets, with market shares of 2.8% in customer loans and 3.0% in customer deposits as of September 2016.**

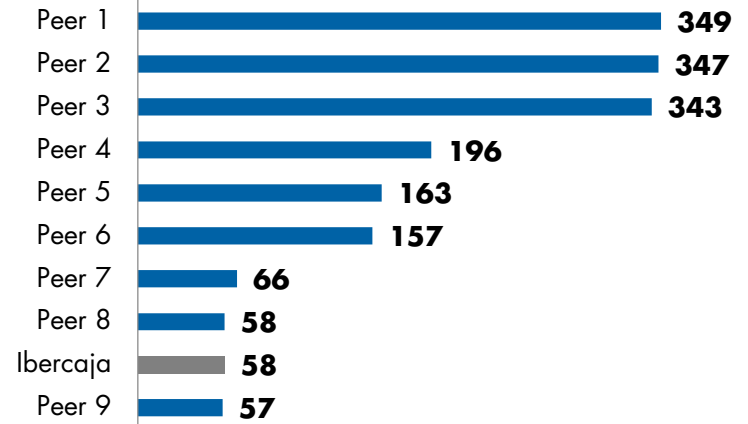
**Acquired Banco Grupo Cajatres in July 2013.**

**6th largest domestic financial entity in asset gathering with €22bn in assets under management and a total market share of 4.4% as of September 2016.**

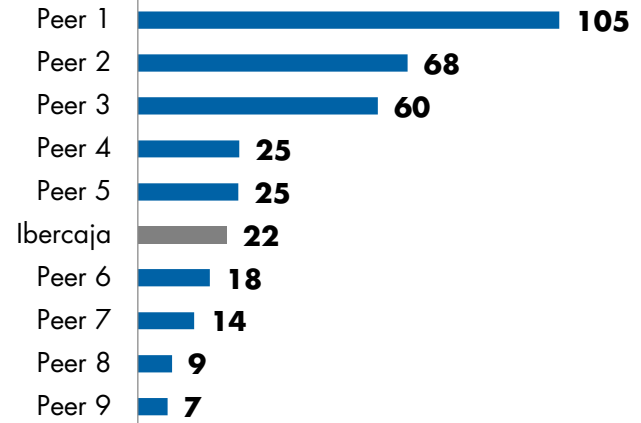
**One of the four former savings banks (out of 45) that has not directly received any state aid.**

**CET1 Phased-In of 12.3% (Sept-16), vs. SREP decision of 7.25%, one of the lowest in Spain, as a result of Ibercaja's low risk profile.**

**Ranking by Assets – 9M2016 €bn**



**Ranking by AuM – 9M2016 €bn<sup>1</sup>**

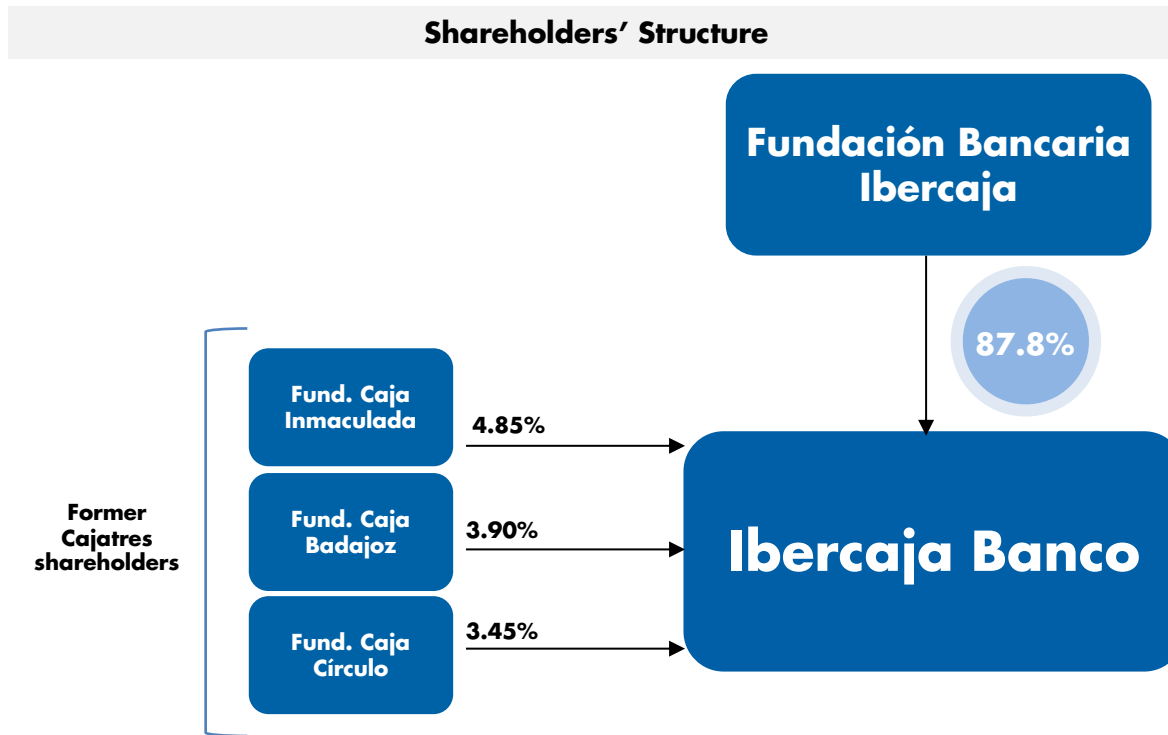


# SHAREHOLDER STRUCTURE

The **main shareholder** of the bank, Ibercaja, became a **banking foundation** in June 2014.

**By law, the Fundación Bancaria Ibercaja's stake in the Bank will have to be at least below 50% by February 2020.**

Our target is to be a listed company no later than **December 2018**.



# BANKING BUSINESS

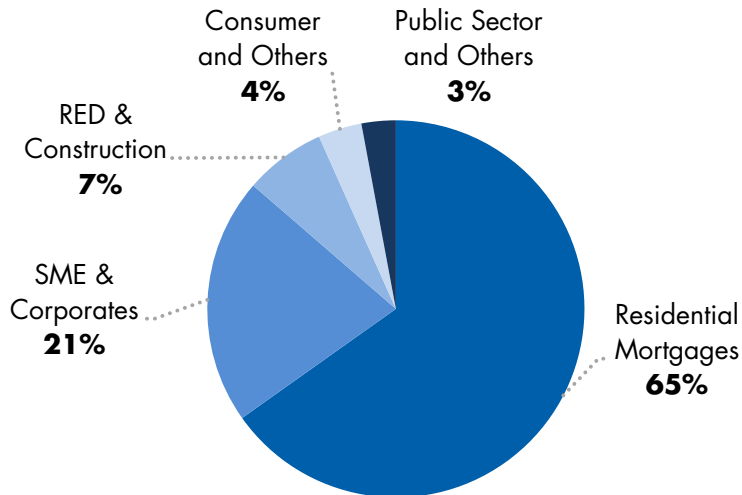
Ibercaja is a pure retail bank.

Specialist in first home retail mortgages and asset gathering.

- One of the highest quality mortgage portfolio in the sector
- Profitable and stable retail funds mix: 78% of customer funds are in current accounts and asset gathering products

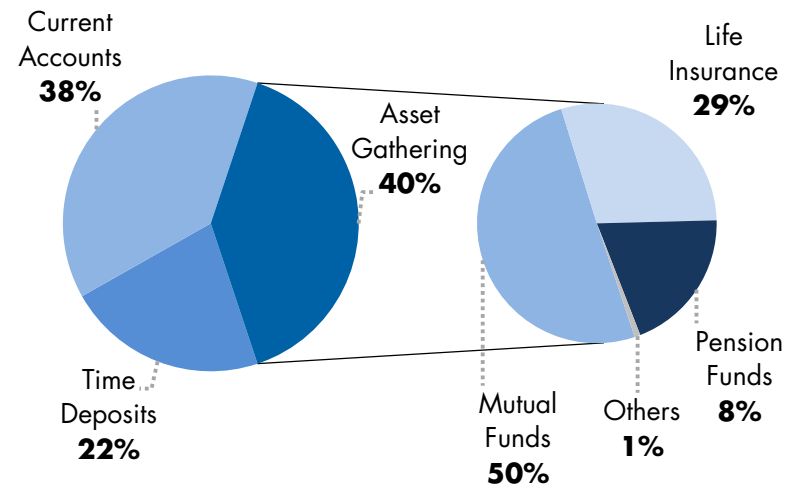
Growing focus in SME's, which already represents 21% of total lending.

Lending Split by Segment – 9M2016



Gross loans ex Repo:  
€33.6bn

Customer Funds – 9M2016



Retail Customer Funds<sup>1</sup>:  
€50.6bn

# GEOGRAPHICAL POSITIONING

## Home Markets

Clear leadership in Aragón (c. 40% market share), La Rioja, Guadalajara, Burgos and Badajoz (≈15% market shares). These regions **represent 60% of Ibercaja's business volume.**

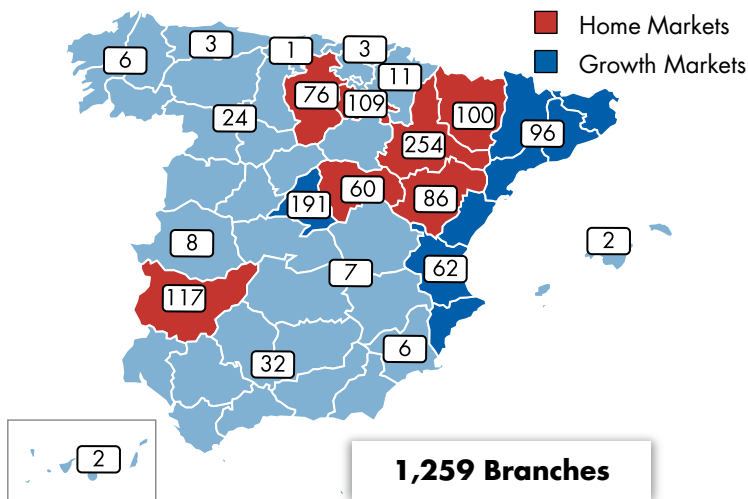
**It is a source of stable deposits:** LTD of 64% with excess deposits of €7.6bn

## Growth Markets

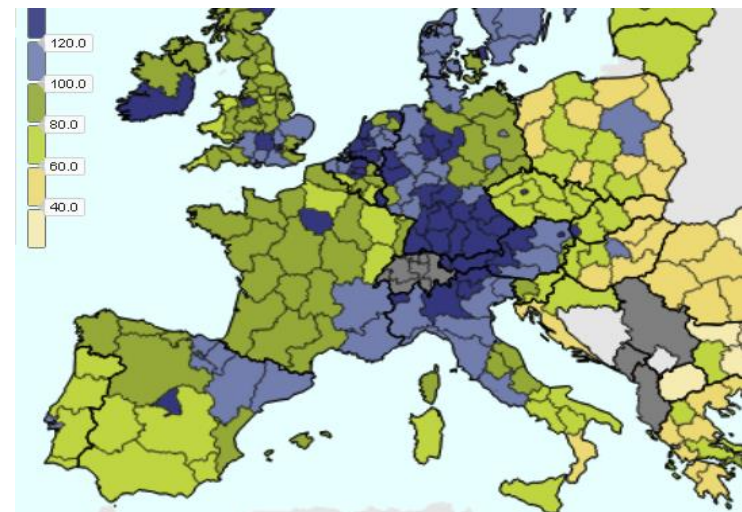
Throughout the 80's and 90's, the bank built a significant presence in **Madrid and the Mediterranean Basin**, key regions of the Spanish economy.

**Well established footprint with 349 branches that represent 30% of Ibercaja's business volume.**

Branch Network – 9M2016



GDP per Capita – 2014 Average EU28=100<sup>1</sup>



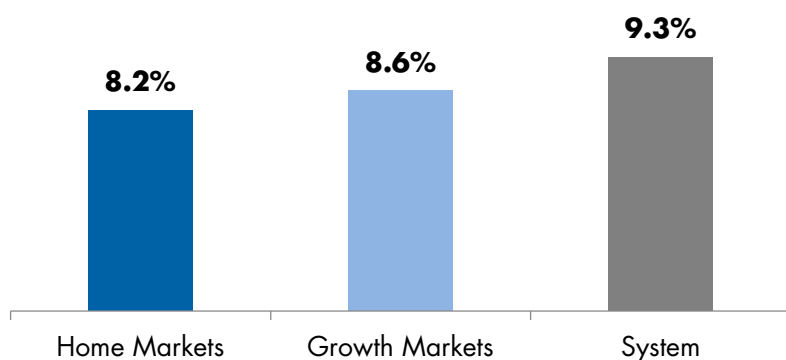


# A WELL ESTABLISHED PLATFORM IN KEY REGIONS OF THE SPANISH ECONOMY

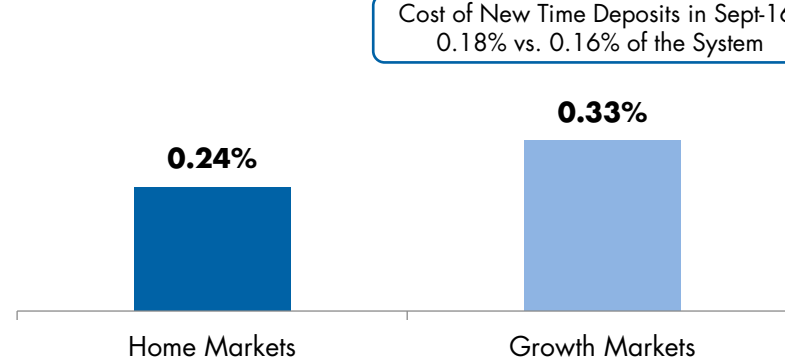
Key banking indicators in our growth regions are similar to those in our home markets.

- Ibercaja has launched **regional strategic plans** to further strengthen its positioning in these markets.

**NPL Ratio – 9M2016**

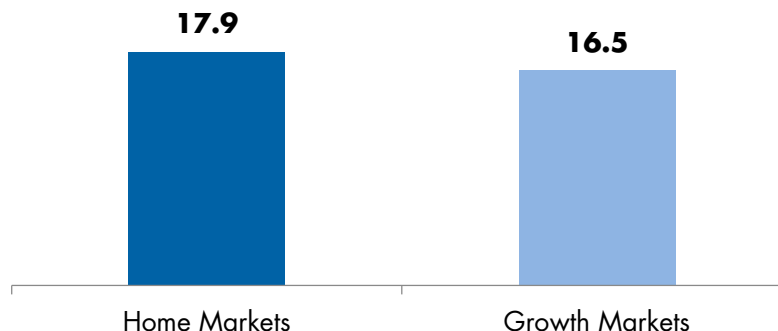


**Cost of Total Deposits – 9M2016**



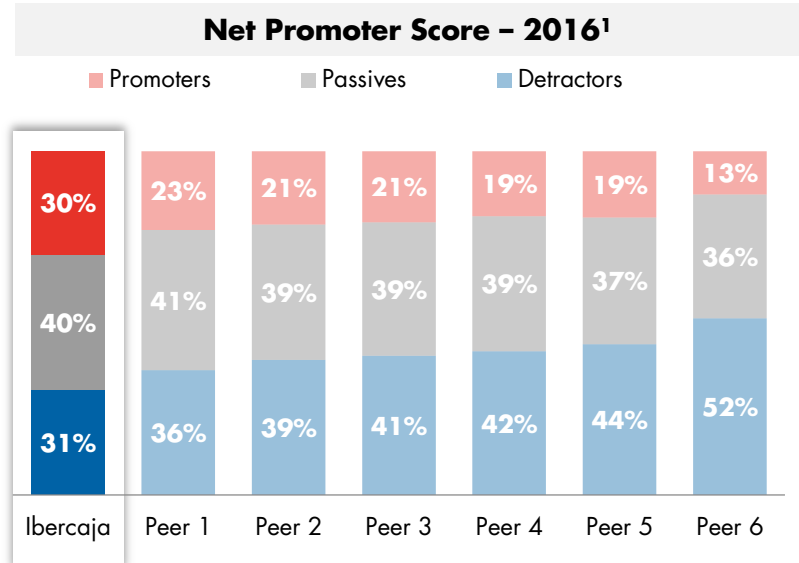
Cost of New Time Deposits in Sept-16:  
0.18% vs. 0.16% of the System

**Business Volume per Employee – 9M2016 €mm**

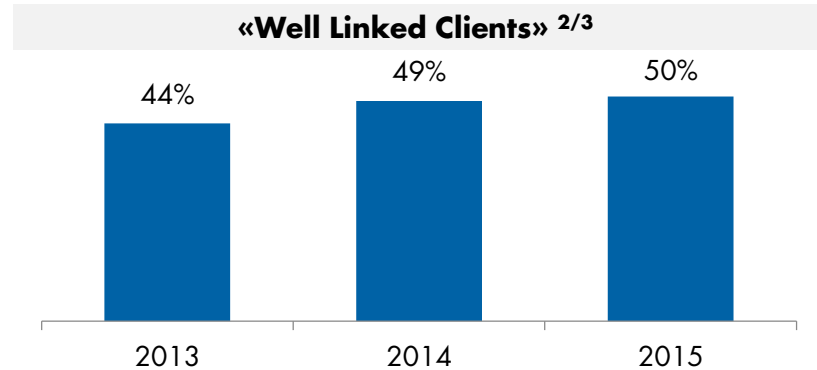
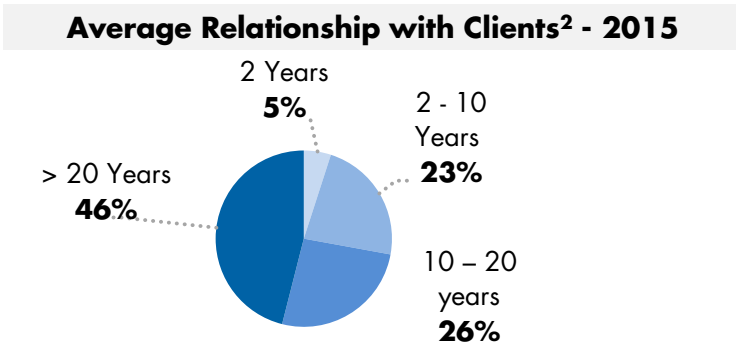


# LEADERSHIP IN CUSTOMER SERVICE LEVELS

Ibercaja has achieved its position in these markets thanks to a **commercial model that has been certified by third parties and that provides best-in-class customer service levels.**



This customer-focused strategy has resulted in **an average customer relationship of 20 years, and high product penetration levels (Avg. No of products/services per client stands at 6.3).**



<sup>1</sup> Source: FRS INMARK for retail customers; Peers include Santander, Popular, BBVA, Caixabank, Sabadell & Bankia

<sup>2</sup> Individuals

<sup>3</sup> A well linked client has, at least, payroll direct deposit, one saving or financing product, and one active debit/credit card

# IBERCAJA'S KEY INVESTMENT HIGHLIGHTS

IBERCAJA FINANCIAL GROUP · CAJATRES ACQUISITION · STRONG FUNDAMENTALS ·  
STRATEGIC PLAN 2015-2017

# IBERCAJA'S KEY INVESTMENT HIGHLIGHTS



**1. Ibercaja Financial Group: A Source of Diversified and Recurrent Revenues**



**2. Cajatres Acquisition: Further Potential for Synergies Generation**



**3. Strong Fundamentals: Asset Quality, Liquidity, Funding and Solvency**

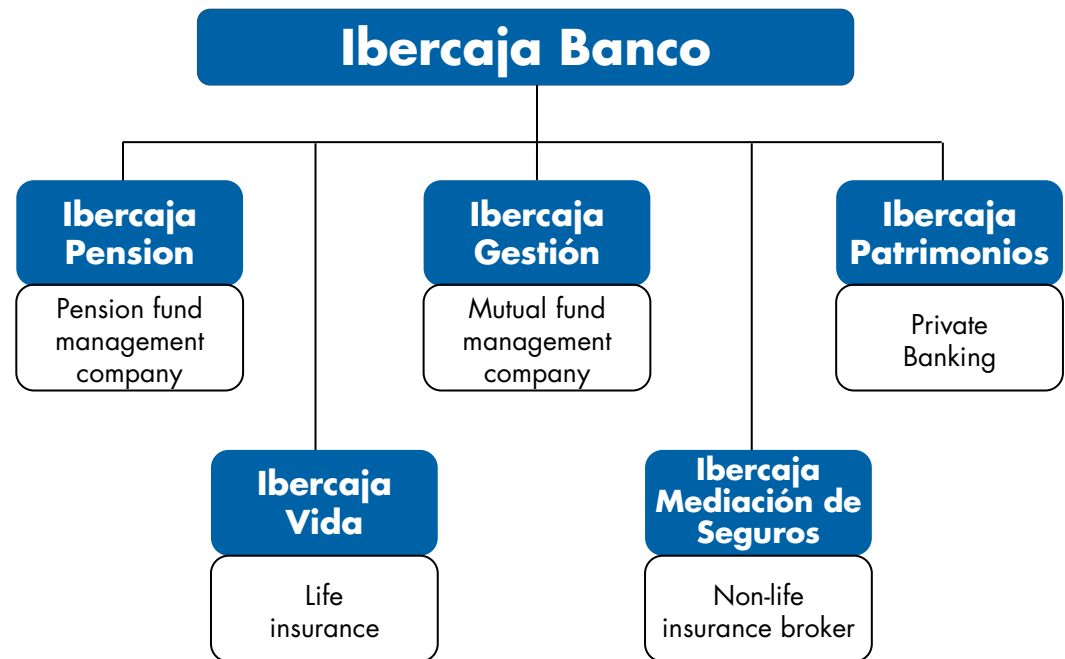


**4. Strategic Plan 2015-2017: Improving Recurrent Profitability while Transforming the Bank**

# IBERCAJA FINANCIAL GROUP: A SOURCE OF DIVERSIFIED AND RECURRENT REVENUES

Ibercaja Financial Group consists of a group of companies specialized in mutual funds, pension plans, bancassurance, private banking, renting and leasing.

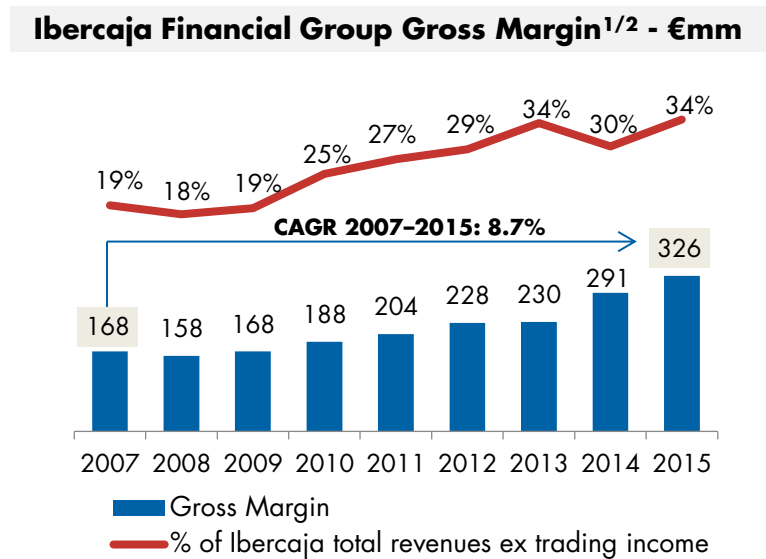
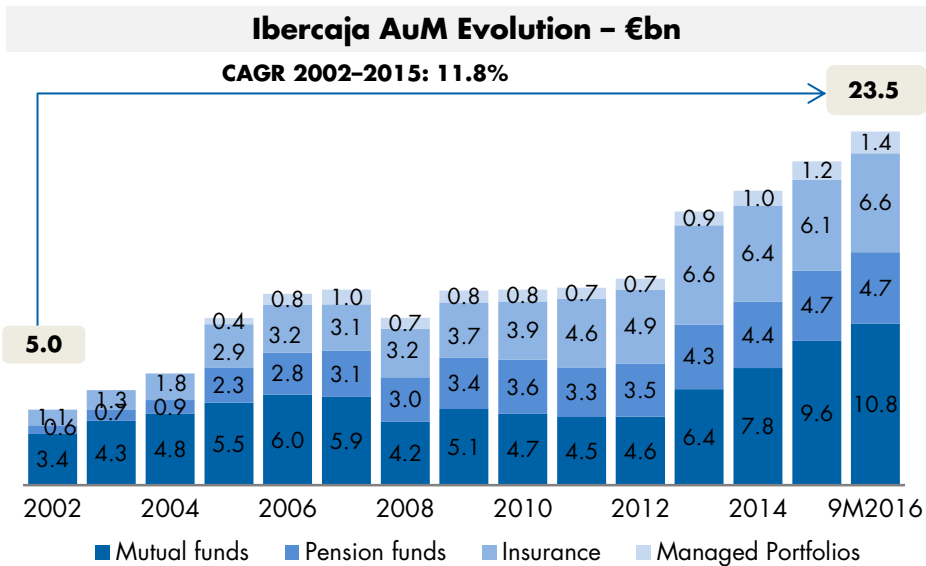
- ✓ **Established in 1988**
- ✓ **100% Ownership**
- ✓ **Managing over €22bn<sup>1</sup> of assets**
- ✓ **AuM CAGR >11% since 2002**
- ✓ **Gross Margin reached €326mm in 2015**
- ✓ **Significant market share (4.4%)**
- ✓ **Highly valuable in current environment of low interest rates and high volatility**



# IBERCAJA FINANCIAL GROUP: A SOURCE OF DIVERSIFIED AND RECURRENT REVENUES

Ibercaja has achieved its positioning in asset gathering thanks to **being one of the first banks in Spain to offer these products which are now fully integrated in the commercial offer of the Bank.**

- Ibercaja Pension was awarded in 2016 as the **best national pension fund manager** in Spain by **“Expansión-Allfunds”**.
- Ibercaja has achieved a **10% market share in new entries to mutual funds in 2016.**



<sup>1</sup> For the period 2007-2013, only considers Ibercaja Banco standalone  
<sup>2</sup> Includes accounting gross margins of the companies and distribution fees paid to Ibercaja Banco

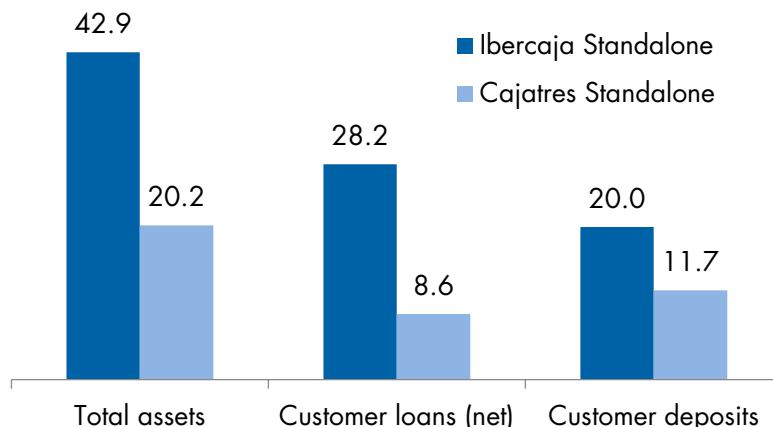
# EXTRACTING SYNERGIES FROM CAJATRES ACQUISITION

On July 2013, Ibercaja Banco acquired Cajatres. The legal, commercial and technological integration was fully completed in October 2014.

## Strategic rationale of the acquisition of Cajatres:

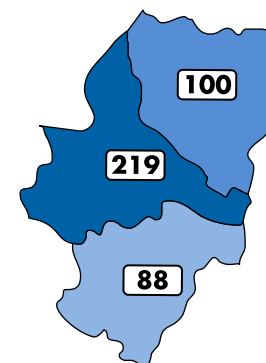
- Cajatres was the **2nd player in Aragón** with a market share of c. 15%, allowing Ibercaja to reach an undisputable leadership, with a **combined market share of 40%**
- **Strong cost and revenue synergies potential** due to a large geographic overlap in branches in Aragón and the implementation of Ibercaja's commercial best practices
- The acquisition allowed Ibercaja to **move from 15th to current 9th place** in the Spanish financial system

Balance Sheet 2013 - €bn

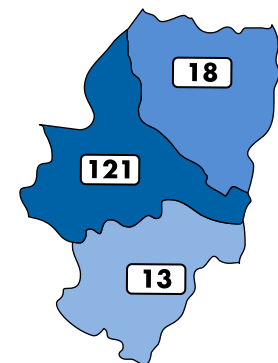


Branch Network in Aragón - 2013

### Ibercaja Standalone



### Cajatres Standalone



**Total: 559**

# EXTRACTING SYNERGIES FROM CAJATRES ACQUISITION

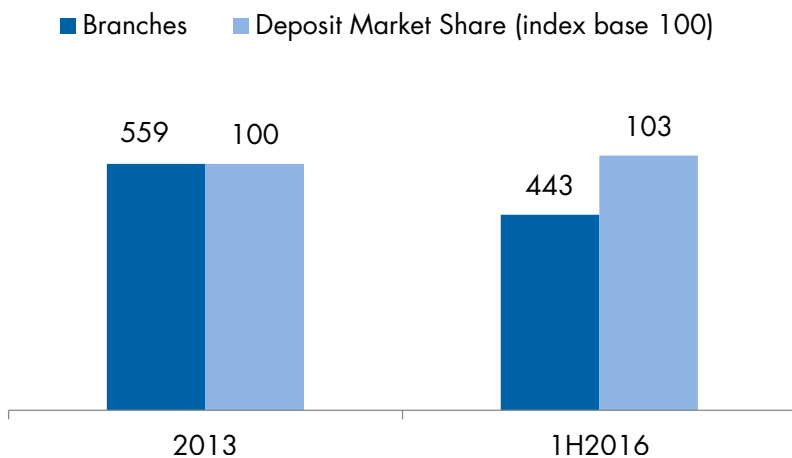
## Strong execution of Cajatres integration:

- Ibercaja has been able to **increase its deposit market share in Aragón** despite the strong adjustment of the branch network (-116 branches, representing 76% of acquired branches).
- Implementation of Ibercaja's commercial model in Cajatres is having positive results with **sound improvement in key product penetration levels and client linkage**.

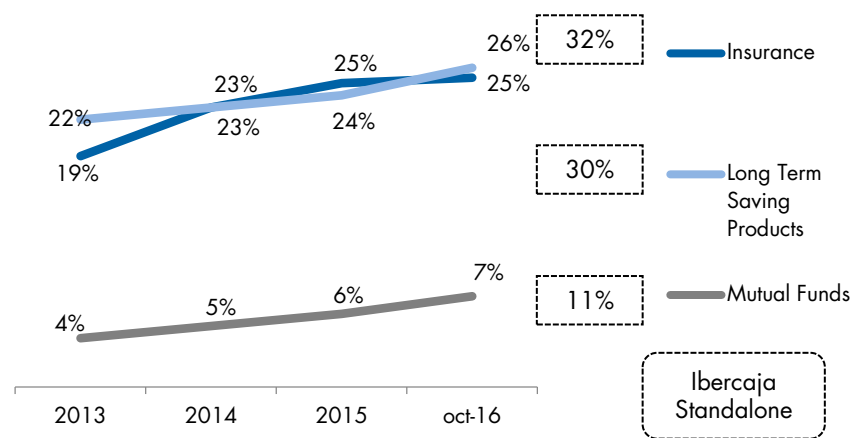
## Ibercaja reaffirms its target of reducing its total cost base by €171mm, announced after Cajatres acquisition

- In 2016 Ibercaja will have achieved 70% of total cost reduction<sup>1</sup>

Evolution in Aragón



Product Penetration - Cajatres Standalone



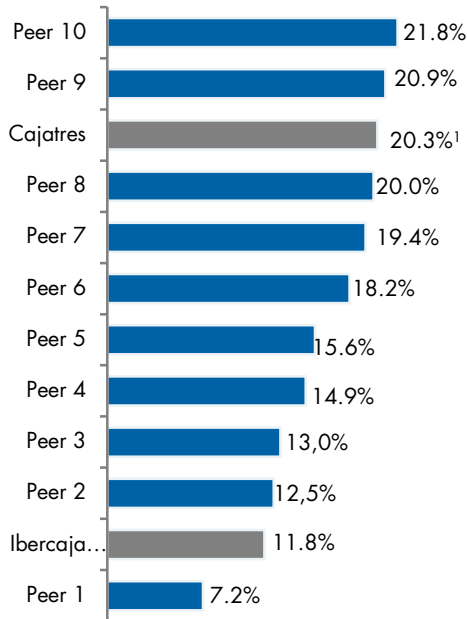
<sup>1</sup> Excluding Aktua agreement costs. In February 2016, Ibercaja announced the sale of its real estate servicer subsidiary (Salduvia) to Aktua. Ibercaja also signed a long-term strategic alliance with Aktua to manage and sale these assets.



# STRONG FUNDAMENTALS: LOW RISK PROFILE CERTIFIED BY THIRD PARTIES

## Expected loss under OW adverse scenario

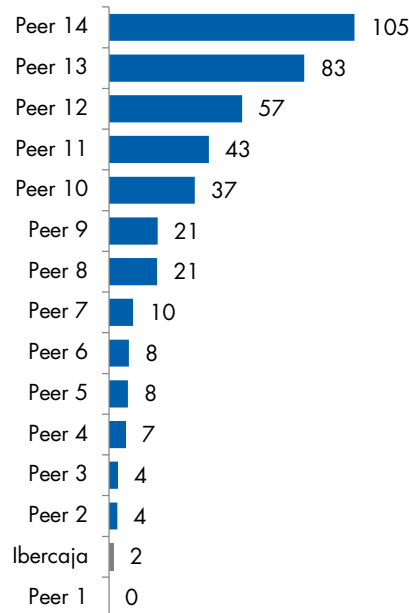
2012



Ibercaja had the 2<sup>nd</sup> lowest expected loss ratio in the Oliver Wyman stress test adverse scenario

## AQR Impact - CET1 b.p.

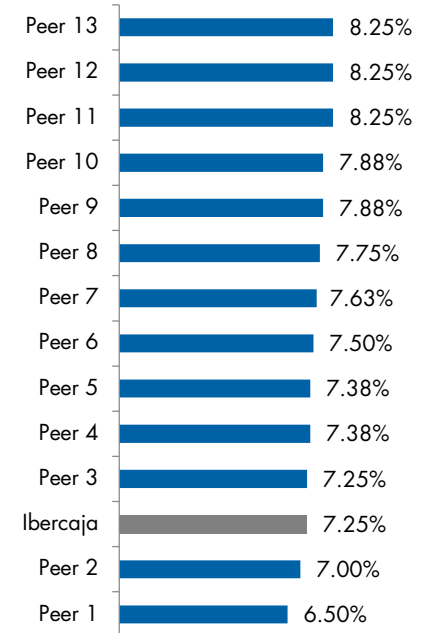
2014



European AQR highlighted the quality of Ibercaja Banco loan portfolio, its high standards of provisioning and its strict policy for categorising and identifying risks within its portfolio.

## SREP Decision

2016



SREP requirement of 7.25% is one of the lowest in the Spanish banking system

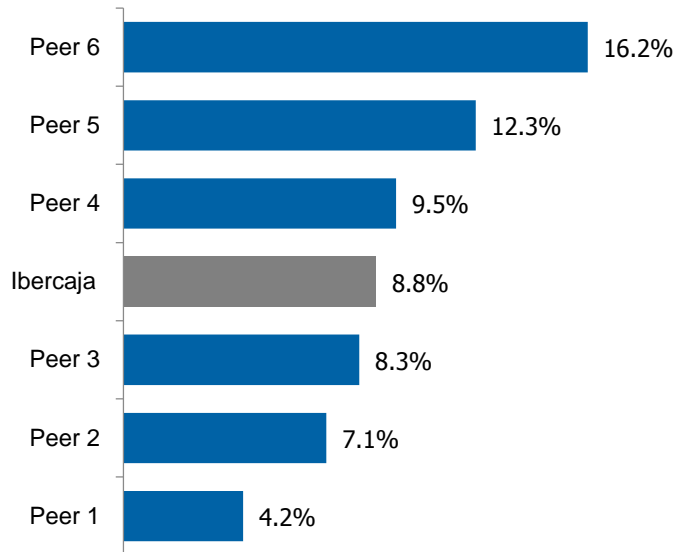
# STRONG FUNDAMENTALS: SUPERIOR ASSET QUALITY

**NPL ratio of 8.8%, while maintaining a strong coverage level.**

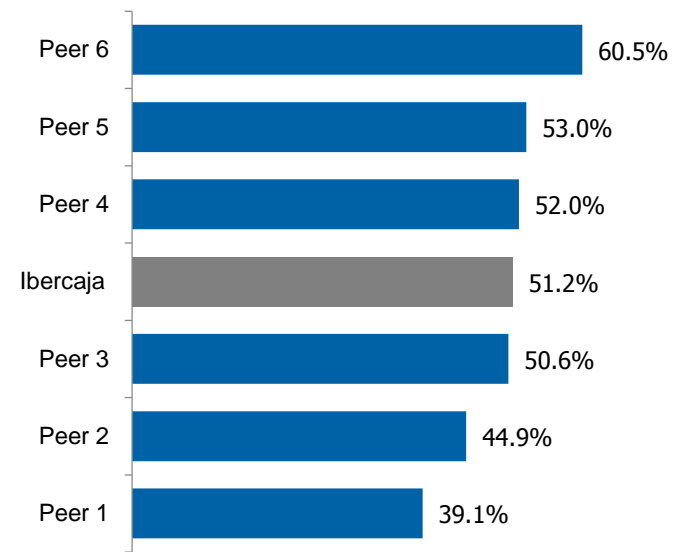
**Sound evolution in NPL since launching our strategic plan:**

- 22% reduction in doubtful loans (-€871 mm) since YE2014
- NPL ratio falls 195 b.p. since YE2014

**NPL Ratio – 9M2016**



**Coverage Ratio – 9M2016**

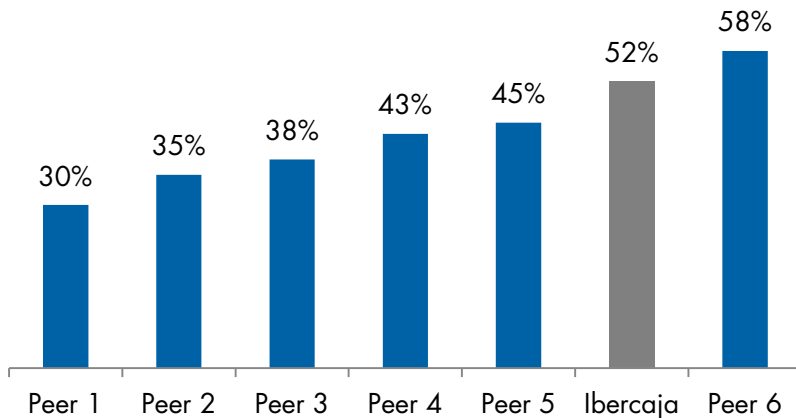


# STRONG FUNDAMENTALS: DECLINING STOCK OF FORECLOSED ASSETS

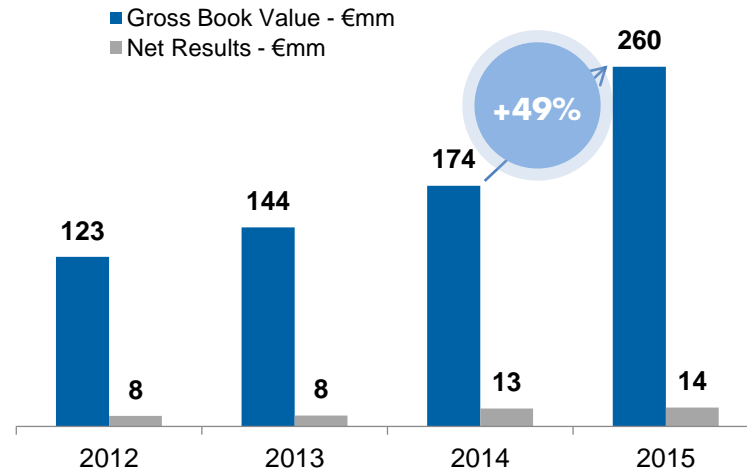
The pickup of asset sales and the reduction in gross entries allows for the reduction of the stock of foreclosed assets. Peak in the stock of foreclosed assets was reached in 2Q2015; 5.1% reduction since then.

- **Foreclosed asset sales rose 49% in 2015**, and +2.6% YoY as of 9M2016.
- In the last 21 months, **Ibercaja has been able to sell over €100mm in land** with no impact in P&L.
- **Coverage ratio stands at 52.5%** as of 9M2016, among the highest in the sector.
- In February 2016 Ibercaja signed a **strategic alliance with Aktua** to further accelerate asset sales

Foreclosed Assets Coverage – 1H2016 <sup>1</sup>



Foreclosed Assets Sales

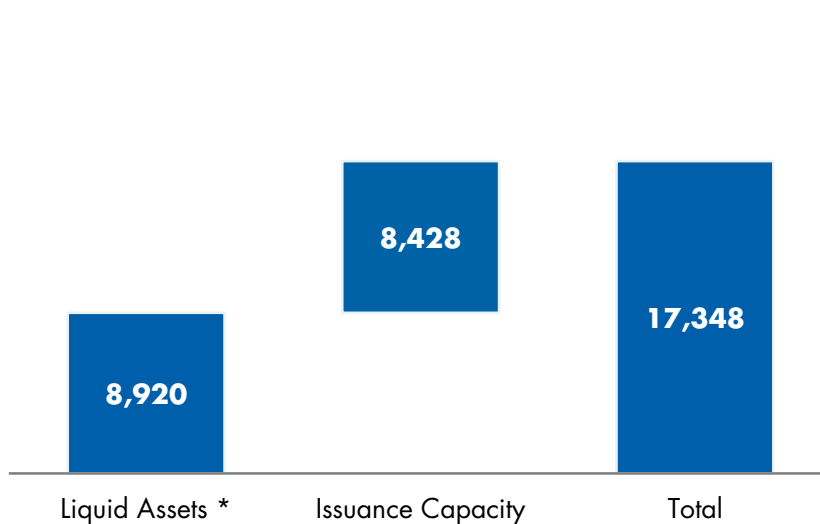


# STRONG FUNDAMENTALS: SOUND LIQUIDITY POSITION

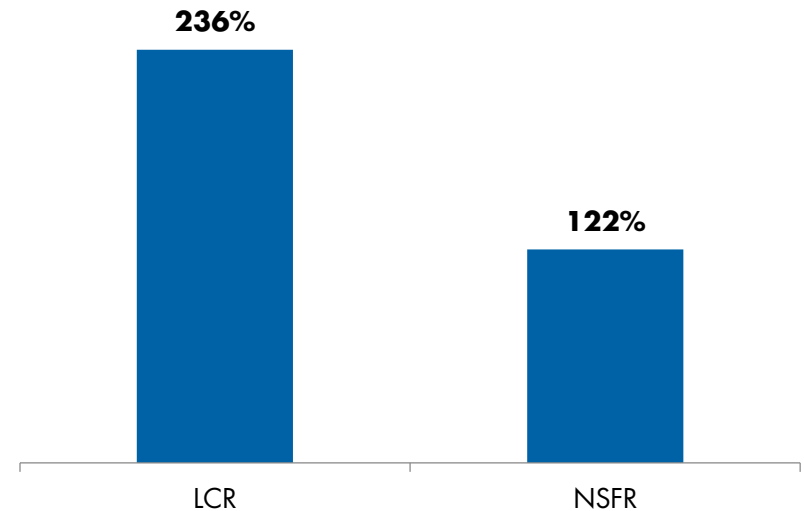
## Sound Liquidity Position:

- **Available liquid assets above €8,900mm** (15% of total assets).
- Regulatory liquidity ratios (LCR and NSFR) comfortably above minimum requirements.

Liquidity Position – €mm



Liquidity Ratios – 9M2016



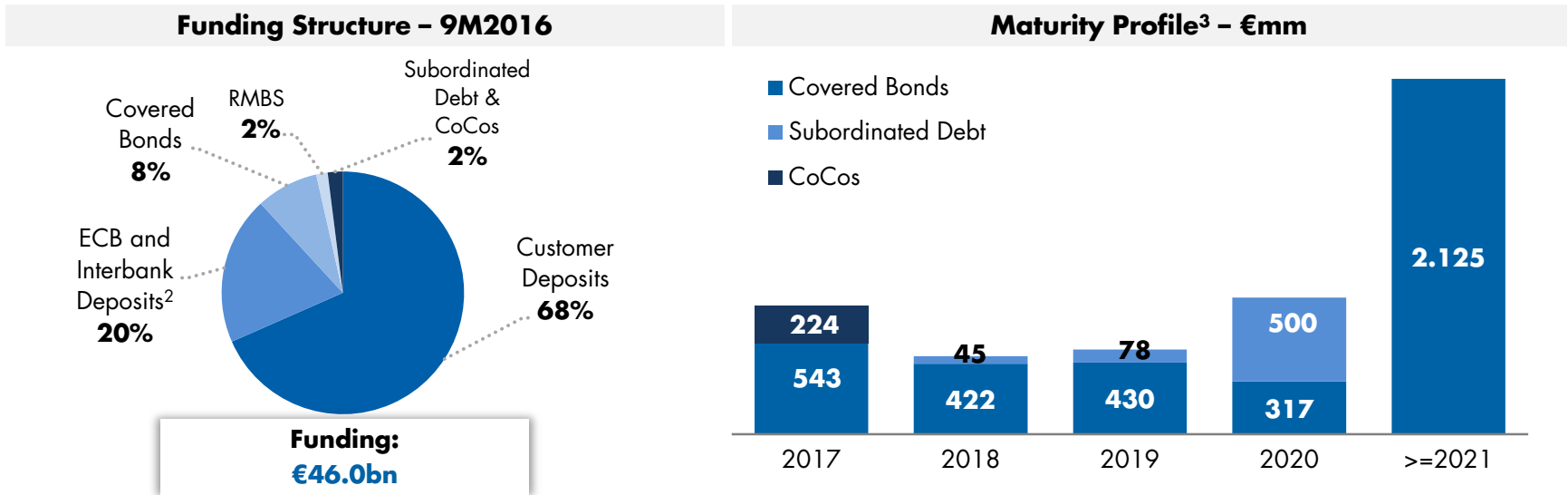
# STRONG FUNDAMENTALS: SOLID FUNDING STRUCTURE

## Well diversified funding structure:

- **Loan to deposits** ratio reaches **98.5%**<sup>1</sup>.
- **Customer deposits** represent **68% of total funding**.
- ECB: €3.372mm (5.8% of total assets), 100% TLTRO II.
- **No significant concentration** in institutional funding **maturities** (below 1.6% of assets every year).

## Last October IberCaja issued €500mm covered bond with a 7 year maturity.

- **Strong demand**, above €1,200mm, led to a **final cost of 34 b.p.**, a historic low for the bank.



<sup>1</sup>Net Loans ex. securitised loans / Customer deposits ex. repos + Securities distributed through the branch network.

<sup>2</sup>Includes long term financing from institutional banks such as ICO and EIB

<sup>3</sup>As of January 1st including recent covered bond issue and CoCos redemption

# STRONG FUNDAMENTALS: SREP DECISION AND COCOS REDEMPTION

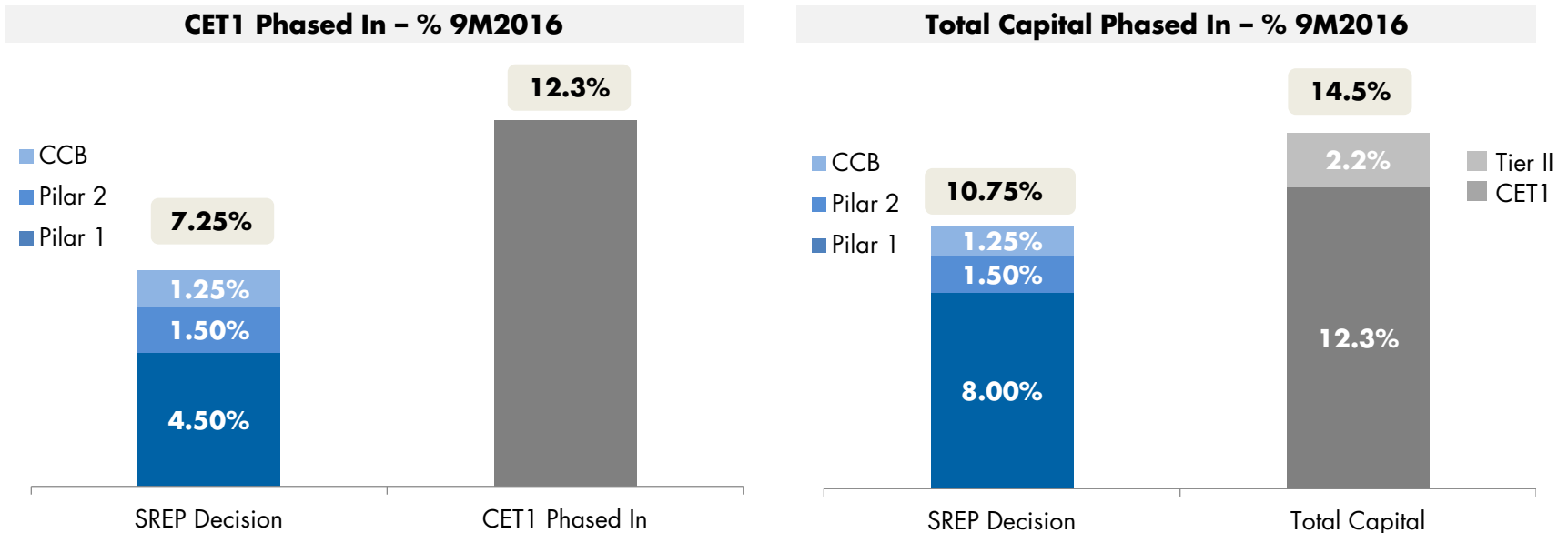
**CET1 Phased In ratio reaches 12.3% as of September 2016 vs. SREP requirement of 7.25%.**

**Total Capital ratio is 14.5% vs. SREP requirement of 10.75%.**

- **Proven access to capital markets:** On July 2015 Ibercaja Banco completed an **issuance of Tier II debt** totaling €500mm. With this transaction the Bank fulfilled the bucket set by Basel III regulation.

**Strong solvency levels has allowed for an early redemption of €163mn of CoCos in December 2016.**

- Redemption impact on CET1 phased-in ratio of 70 b.p.<sup>1</sup>

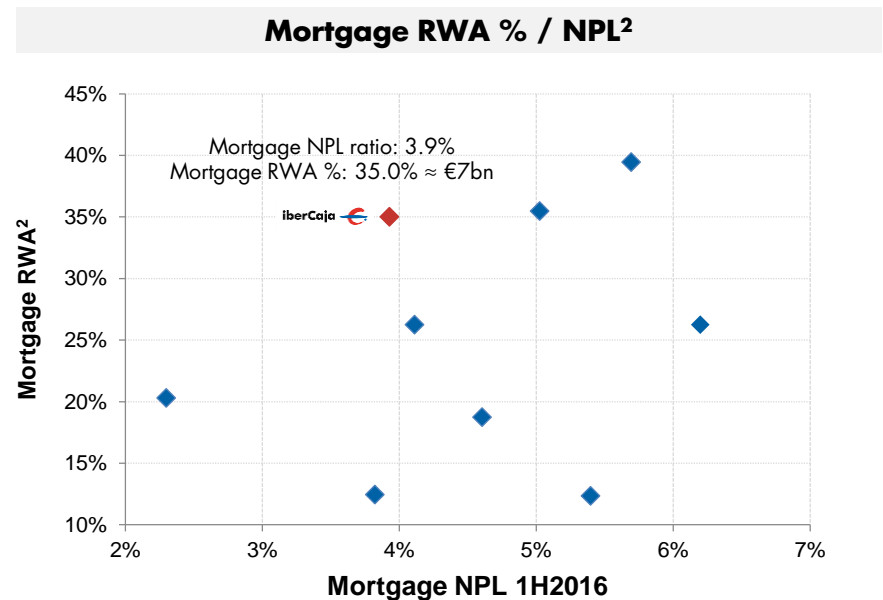
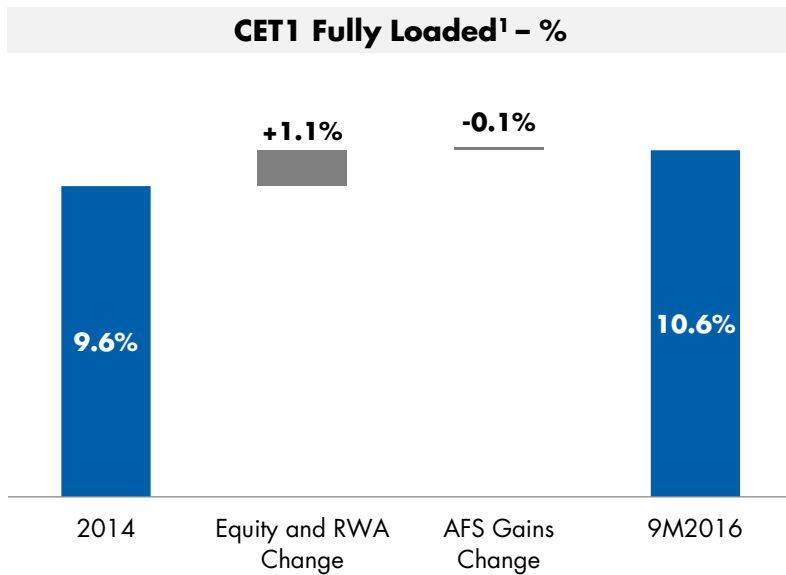


# STRONG FUNDAMENTALS: SIGNIFICANT PROGRESS IN CAPITAL GENERATION

**CET1 Fully Loaded ratio – ex CoCos – stands at 10.6%.**

- Sound organic capital generation since launching our strategic plan: +101 b.p. over the last 7 quarters.

**Leverage ratio: 5.5% (Phased In).**

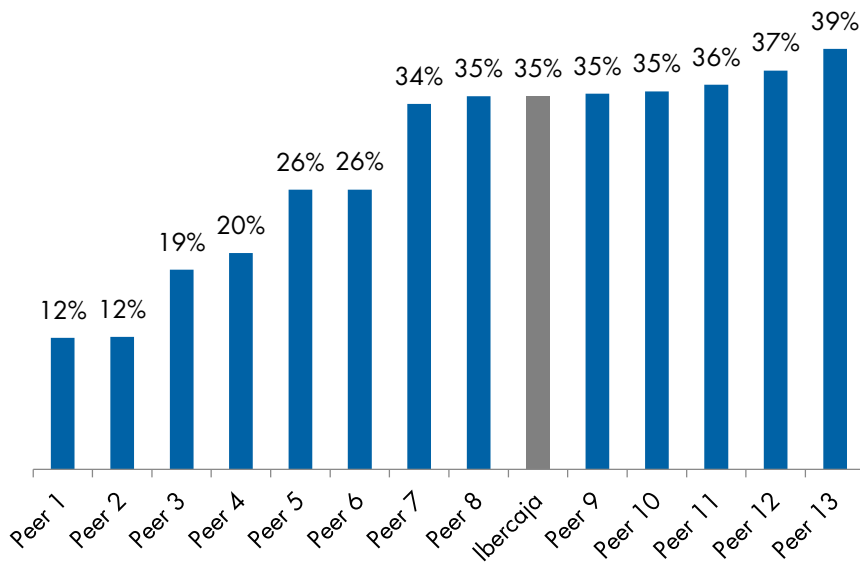


# STRONG FUNDAMENTALS: HIGH RWA DENSITY

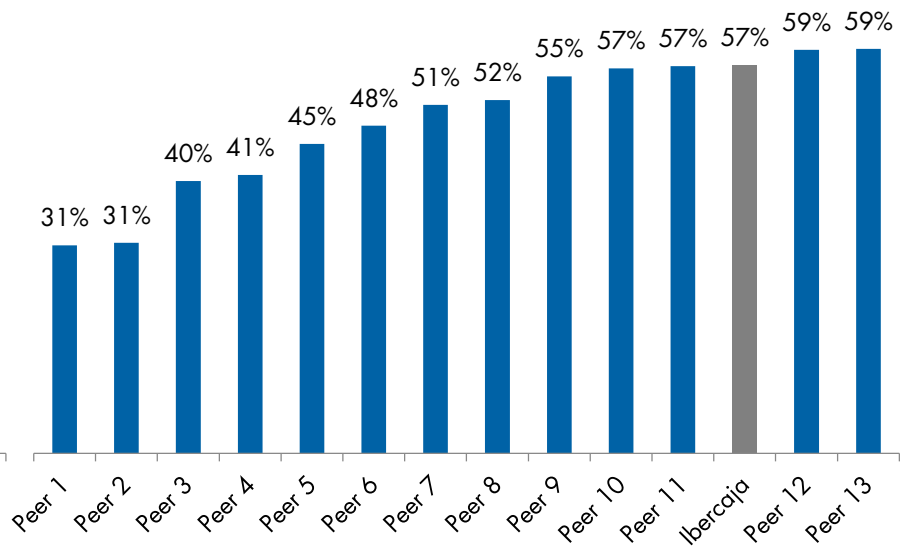
RWA / TA stands at 40%, applying standard methodology calculation. High RWA density, considering Ibercaja business model and asset quality levels.

- Residential mortgage RWA stands at 35%, despite having one of the lowest NPL ratios in the sector.

**RWA Residential Mortgages<sup>1</sup> - %**



**RWA SME Lending<sup>1</sup> - RWA**



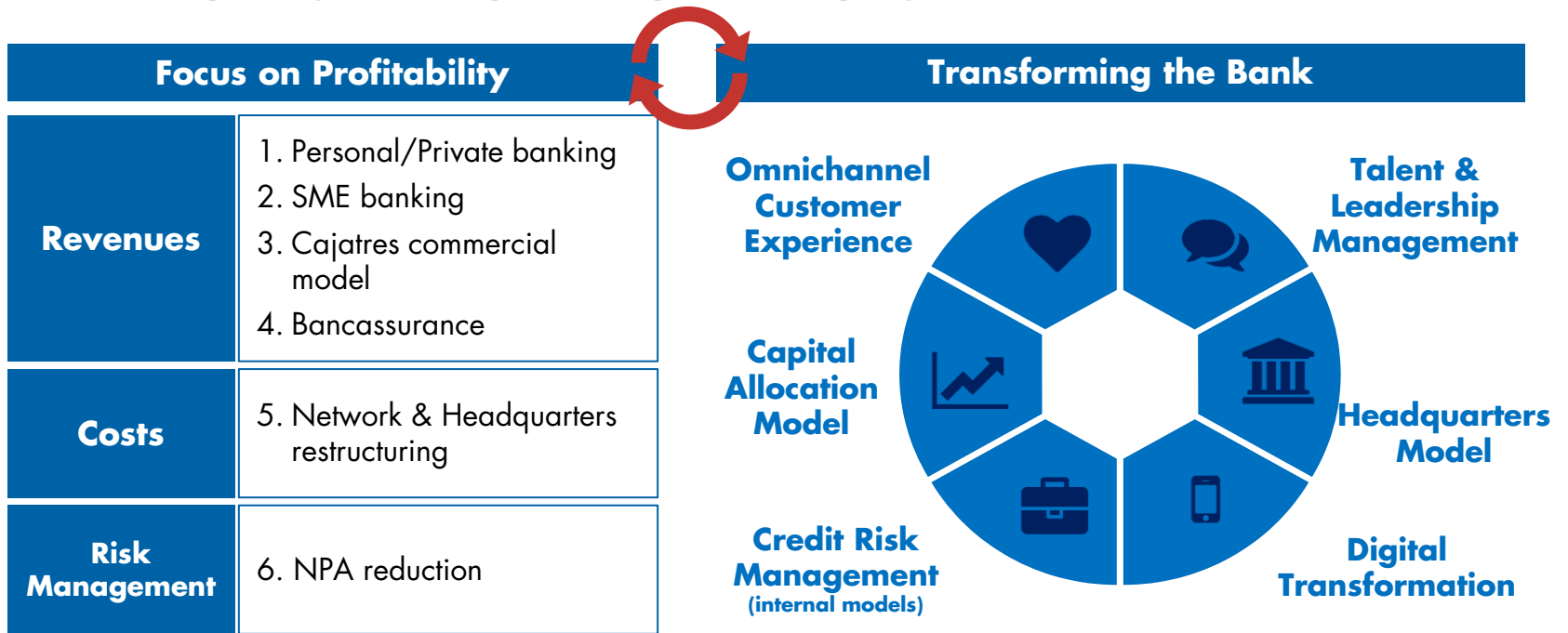
<sup>1</sup>According to EBA 2016 transparency exercise



# STRATEGIC PLAN 2015-2017: IMPROVING RECURRENT PROFITABILITY WHILE TRANSFORMING THE BANK

Our Strategic Plan 2015-2017 was launched in March 2015 when the management team of Ibercaja Banco was renewed.

Focus on improving recurrent profitability while adapting the bank to a new environment.



The Strategic Plan is the roadmap to achieve a successful IPO

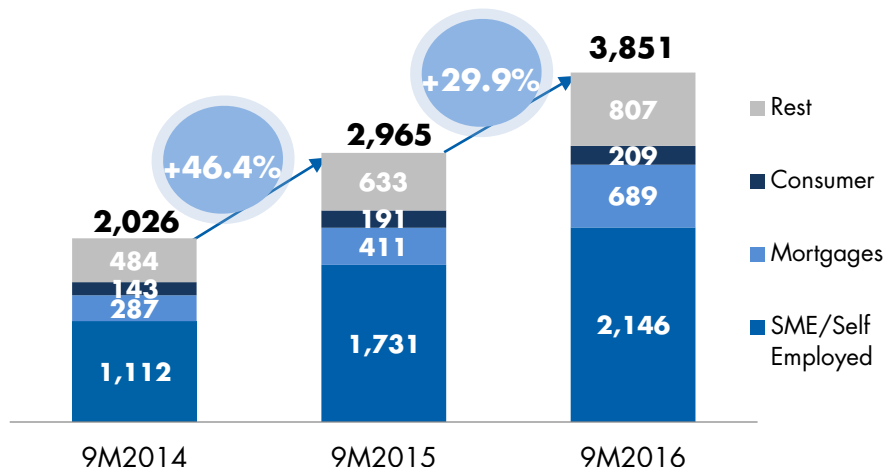
# STRATEGIC PLAN 2015-2017: 4 LEVERS TO ACHIEVE A RATE ABOVE OUR COST OF CAPITAL

## 1 Stabilization in Net Interest Margin

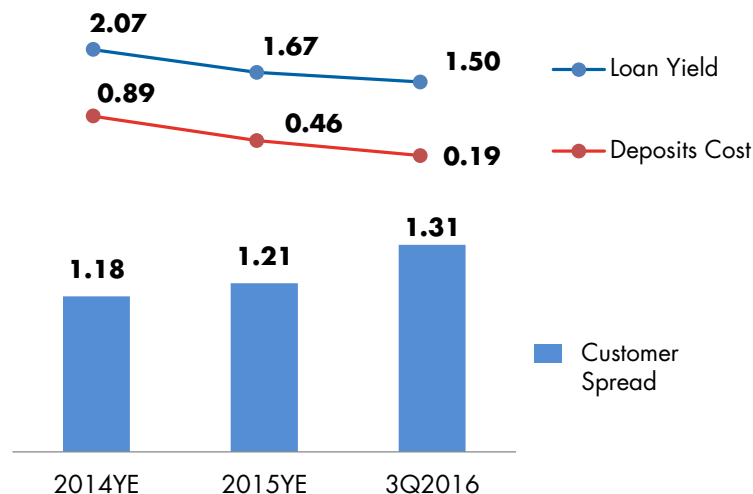
Positive dynamics in new lending and spreads should allow for stabilization of net interest margin in coming quarters:

- New lending continues to show a remarkable growth.
- Stock of performing loans to non-real estate companies grows 13% YoY or €718mm (9M2016).
- Customer spread improves 13 b.p. since 2014 despite falling Euribor.

**New Loan Production<sup>1</sup> – €mm**



**Customer Spread - %**



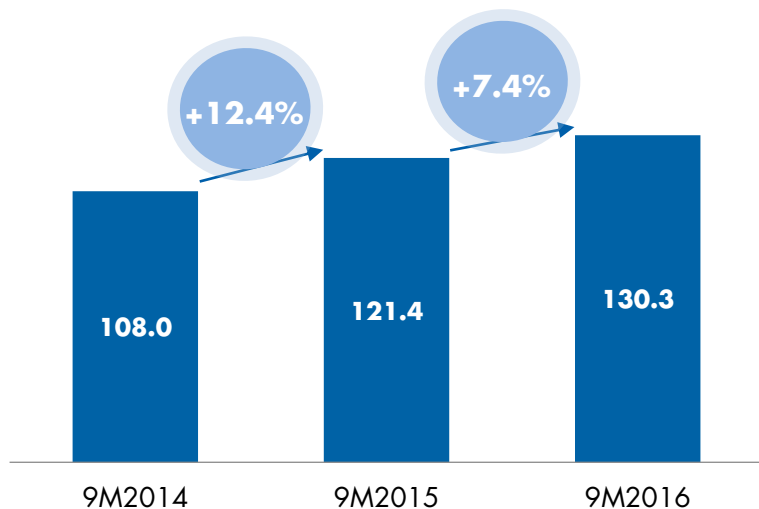
# STRATEGIC PLAN 2015-2017: 4 LEVERS TO ACHIEVE A RATE ABOVE OUR COST OF CAPITAL

## 2 Growth in Non-Banking Commissions

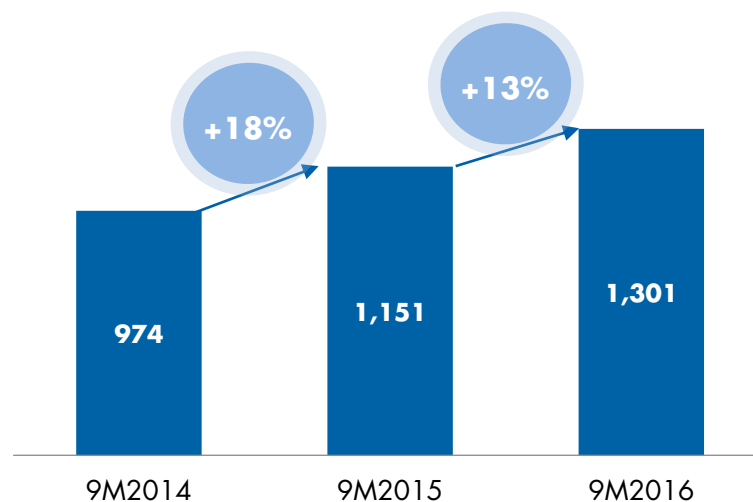
Current interest rate environment should allow for sound growth of AuM<sup>1</sup> and non banking commissions.

- Non-banking commissions represent 53% of total commissions, the highest weight in the sector.

Non Banking Commissions – €mm



AuM Net New Money – €mm



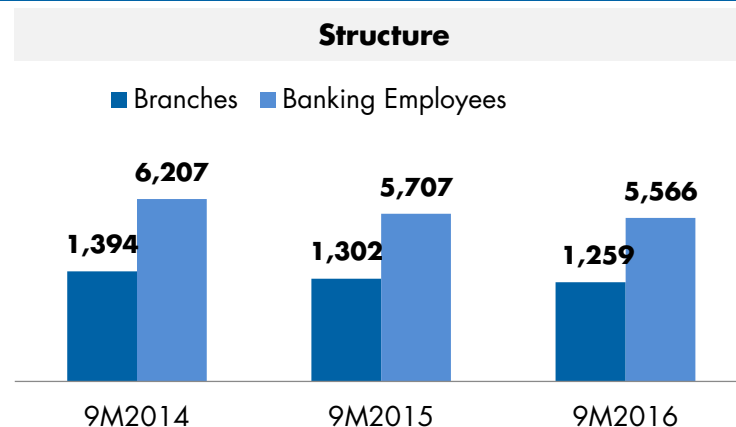
# STRATEGIC PLAN 2015-2017: 4 LEVERS TO ACHIEVE A RATE ABOVE OUR COST OF CAPITAL

3

## Operating Costs Reduction

Ibercaja reaffirms its target of reducing its total cost base by €171mm, announced after Cajatres acquisition.

- After a ≈10% structure / cost reduction since 2014, this target represents a 10% additional reduction in coming quarters.

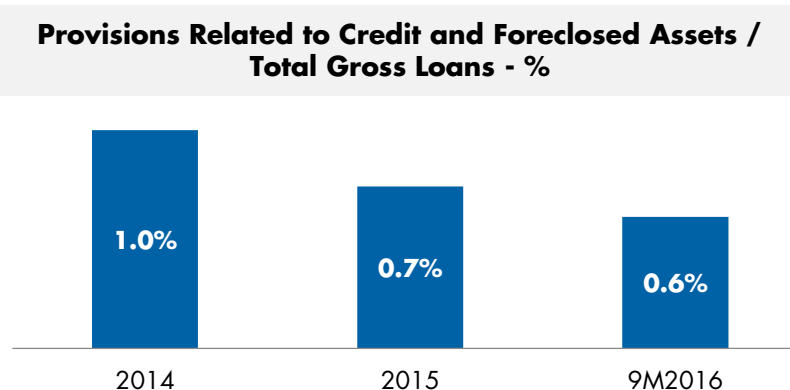


4

## Cost of Risk Reduction

Ibercaja targets a cost of risk of 50 b.p.

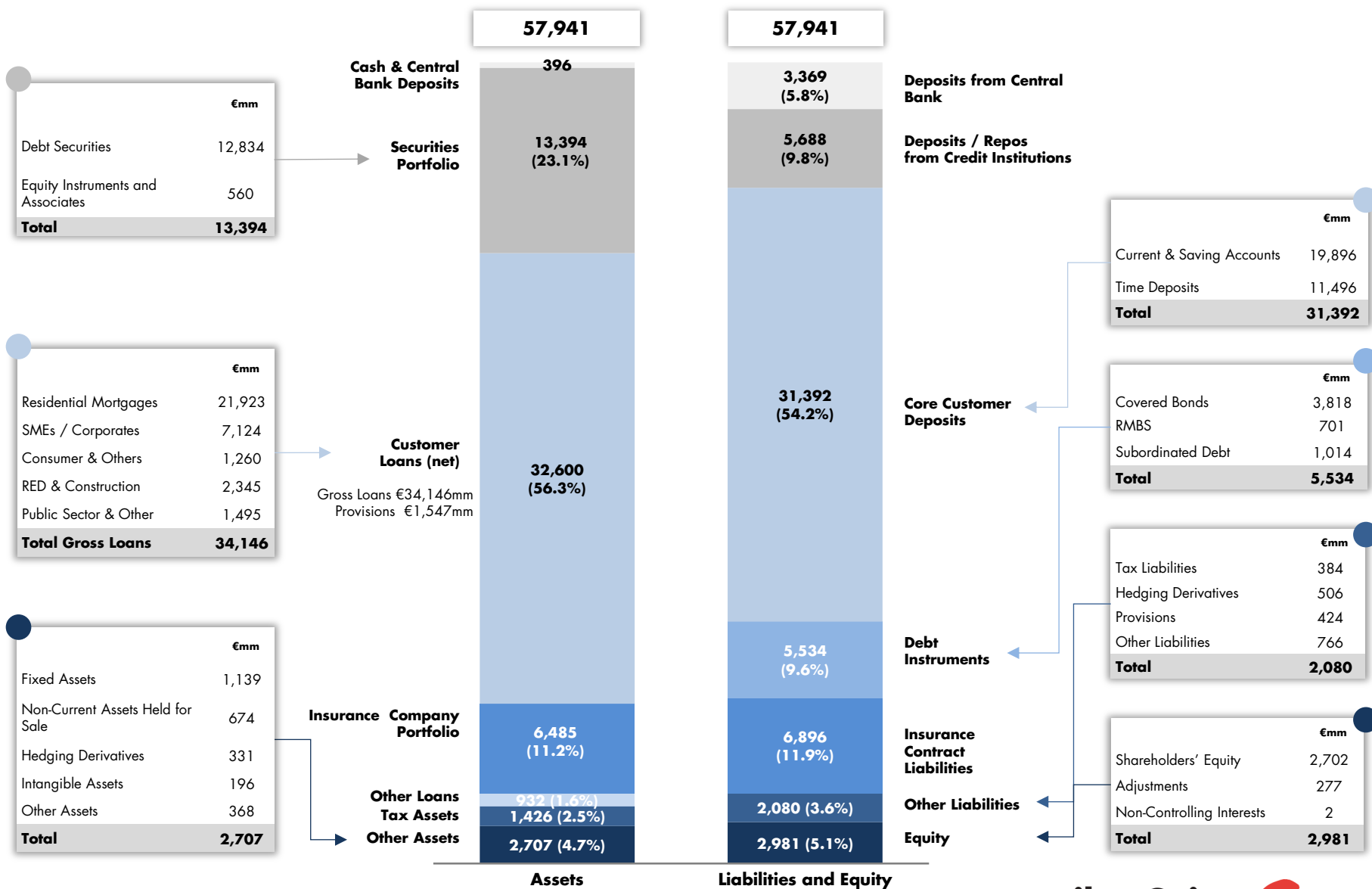
- As of September 2016 Ibercaja Banco has build up prudential provisions amounting to €116mn.



# ANNEX 1

CONSOLIDATED BALANCE SHEET · P&L ACCOUNT

# CONSOLIDATED BALANCE SHEET – September 2016



# P&L ACCOUNT

mm€	9M2015	9M2016	YoY
<b>Net Interest Income</b>	<b>487.3</b>	<b>427.3</b>	<b>-12.3%</b>
<b>Net Fee Income</b>	245.1	247.6	1.0%
<b>Trading Income</b>	140.0	148.4	6.0%
<b>Other Operating Inc. / Exp. (Net) *</b>	28.0	80.9	189.4%
<b>Gross Operating Income</b>	<b>900.4</b>	<b>904.3</b>	<b>0.4%</b>
<b>Operating Costs</b>	-473.0	-465.6	-1.6%
<b>Pre-Provision Profit</b>	<b>427.3</b>	<b>438.6</b>	<b>2.6%</b>
<b>Total Provisions</b>	-303.7	-286.8	-5.6%
<b>Other Gains and Losses</b>	22.5	-1.2	-105.4%
<b>Profit Before Taxes</b>	<b>146.1</b>	<b>150.6</b>	<b>3.0%</b>
<b>Taxes &amp; Minorities</b>	-43.0	-40.8	-5.1%
<b>Net Profit Attributable to Shareholders</b>	<b>103.1</b>	<b>109.8</b>	<b>6.4%</b>

\* Other operating results include a net gain of €69.3mm related to the sale of the real estate servicer

# ANNEX 2

STRATEGIC ALLIANCE WITH MICROSOFT



# STRATEGIC ALLIANCE WITH MICROSOFT

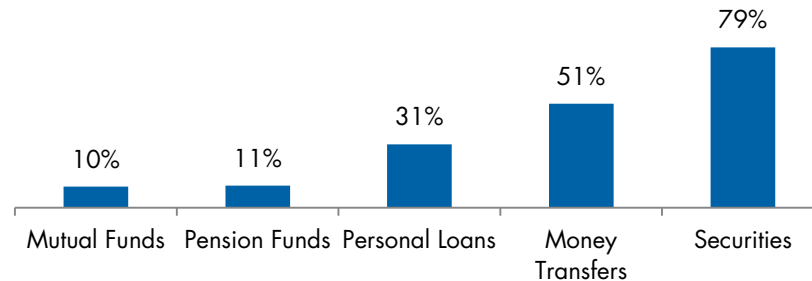
Ibercaja signed in May 2016 a strategic agreement with Microsoft to develop the bank's digital transformation process.

This agreement, that initially extends until 2018, focuses on the three main areas of digital transformation: customer experience, efficiency and internal processes, and business model, products and services.



**% Digital Transactions – Economic Transactions**

**Ibercaja today:  
(dec-15)**





**CONTACT**

[investors@ibercaja.es](mailto:investors@ibercaja.es)

**For more information, VISIT OUR WEBSITE:**

<http://www.ibercaja.com/en/>